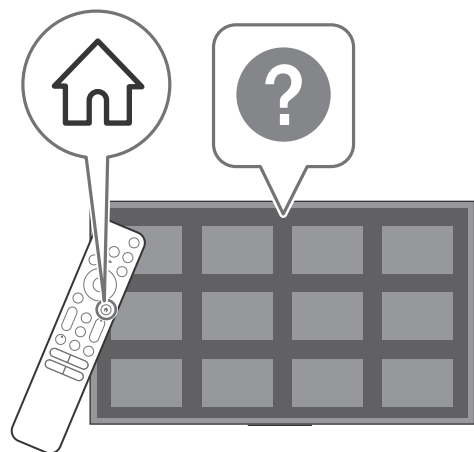




Television



BRAVIA XR

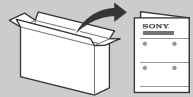
| | |
|------------------------|----|
| Reference Guide | GB |
| Guide de référence | FR |
| Guía de referencia | ES |
| Referentiegids | NL |
| Referenzanleitung | DE |
| Guia de referència | PT |
| Guida di riferimento | IT |
| Referensmaterial | SE |
| Referencevejledning | DK |
| Viiteopas | FI |
| Referanseveiledning | NO |
| Przewodnik | PL |
| Referenční příručka | CZ |
| Referenčná príručka | SK |
| Felhasználói útmutató | HU |
| Ghid de referință | RO |
| Информация за продукта | BG |
| Οδηγός αναφοράς | GR |
| Başvuru Kılavuzu | TR |

About Manuals

This TV comes with the following manuals. Please retain the manuals for future reference.

Setup Guide

- TV installation and setup.




Reference Guide (this manual) / Safety Documentation

- Safety information, remote control, troubleshooting, wall-mount installation, specification, etc.



Help Guide (On screen Manual)

- Settings, functions, Internet connection, troubleshooting, etc.
- To open it, press  (Input select) on the remote control and select [Help]. If [Help] does not exist, select [Edit] and add [Help].

- You can refer to the Help Guide with your smartphone.



https://rd1.sony.net/help/tv/jaep1/h_aep/

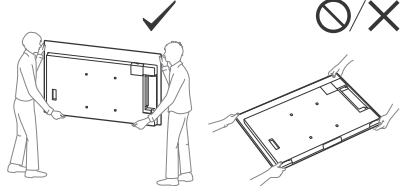
Note

- Before operating the TV, please read the "Safety Information".
- Read the supplied safety documentation for additional safety information.
- Images and illustrations used in the Setup Guide and this manual are for reference only and may differ from the actual product.
- The "x"/"xx" that appears in the model name corresponds to a numeric digit, related to design, colour or TV system.

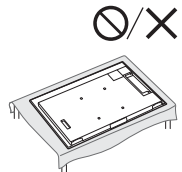
Safety Information

Transporting

- Before transporting the TV set, disconnect all cables.
- Two or more persons are needed to transport a large TV set.
- When transporting the TV set by hand, hold it as shown below. Do not put stress on the panel and the frame around the screen.



- When handling or mounting the TV set, do not lay down the TV (except XR-55A8xK / 55A7xK).



- When transporting the TV set, do not subject it to jolts or excessive vibration.
- When transporting the TV set for repairs or when moving, pack it using the original carton and packing material.

IMPORTANT NOTICE

Notice for Radio Equipment

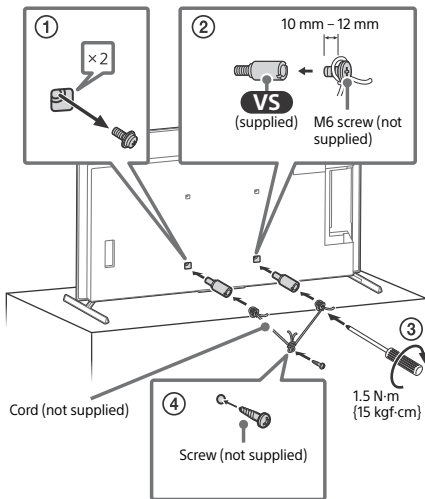
Hereby, Sony Corporation declares that the radio equipment types XR-77A84K, XR-77A83K, XR-77A80K, XR-65A84K, XR-65A83K, XR-65A80K, XR-65A75K, XR-55A84K, XR-55A83K, XR-55A80K, XR-55A75K are in compliance with Directive 2014/53/EU. The full text of the EU declaration of conformity is available at the following internet address: <https://compliance.sony.eu>

Hereby, Sony Corporation declares that the radio equipment types XR-77A84K, XR-77A80K, XR-65A84K, XR-65A80K, XR-65A75K, XR-55A84K, XR-55A80K, XR-55A75K are in compliance with the UK relevant statutory requirements. The full text of the declaration of conformity is available at the following internet address: <https://compliance.sony.co.uk>

For this radio equipment, the following restrictions on putting into service or of requirements for authorization of use apply in AT, BE, HR, CY, CZ, DK, EE, FI, FR, DE, EL, HU, IE, IT, LV, LT, LU, MT, NL, PL, PT, SK, SI, ES, SE, UK, UK (NI), IS, LI, NO, CH, BG, RO, TR, AL, BA, MK, MD, RS, ME, Kosovo :

5150 - 5350 MHz band is restricted to indoor operations only.

Topple prevention



Protecting the TV Screen (OLED TV)

Precautions to Protect the Screen from Damage

Image retention

OLED TV's are susceptible to image retention (burn-in) due to the characteristics of the materials used. Image retention may occur if images are displayed in the same location on the screen repeatedly or over extended periods of time. This is not a malfunction of the TV. Avoid displaying images that may cause image retention.

The following are examples of images that may cause image retention:

- Content with black bars either on the top and bottom and/or the left and right sides of the screen. (for example, Letterboxed, 4:3 screen, Standard definition)
- Static images such as photos.
- On-screen menus, programme guides, channel logos etc.
- Static content from applications.
- On-screen tickers, such as those used for news and headlines.

To reduce the risk of image retention:

- Sony recommends that you turn off the TV normally by pressing the power button on the remote control or the TV.
- Fill the screen by changing [Wide mode] to eliminate the black bars. Select [Wide mode] other than [Normal].
- Turn off the OSD (On Screen Display) by pressing **123** (Control menu) button and select [Info], and turn off the menus from connected equipment.
- Avoid displaying static images with bright colours (including white), clocks or logos on any portion of the screen.
- Set the picture settings based on the ambient conditions. The Standard Picture is recommended for home use and when viewing content that often displays the station logos, etc.

The TV has following features to help reduce/prevent image retention.

Panel refresh

A panel refresh will adjust the panel uniformity. Panel refresh can be performed and should only be used when image retention is very noticeable.

Caution:

- The Panel refresh function may affect the panel. Do not perform Panel refresh more than once a year as it may affect the usable life of the panel.
- Panel refresh takes about ten minutes to complete.
- The effectiveness of a panel refresh may vary depending on the image retention condition.

Pixel shift

Automatically moves the image on the screen to prevent image retention.

Other feature

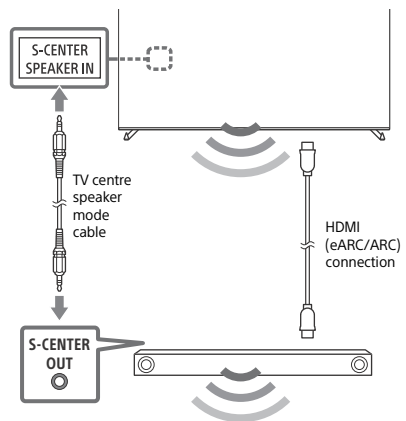
The screen brightness is automatically reduced when displaying still images, clocks, bright colours or logos etc.

GB

Using TV as Part of Audio System

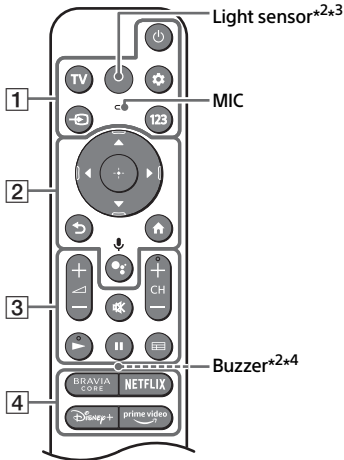
Note

- Before connecting cables, disconnect the mains lead of both TV and AV receiver.
- Refer to the instruction manual of the Audio system with S-CENTER OUT terminal for detail.



Remote Control and TV

The remote control shape, layout, availability and function of remote control buttons may vary depending on your region/country/TV model/TV settings*¹.



1 ⏻ (Power)

TV: Display TV channel list or switch to input.

⚙️ (Quick settings): Display Quick Settings.

↵ (Input select): Display and select the input source, etc.

123 (Control menu): Display the Control menu.

2 ▲ / ▼ / ◀ / ▶ / ⊕: On screen menu navigation and selection.

↶ (Back)

⬆️ (Home)

🗣️ (Google Assistant) / 🎤 (Microphone): Use Google Assistant*⁵*⁶ or voice search*⁶.

3 🔊 + / - (Volume)

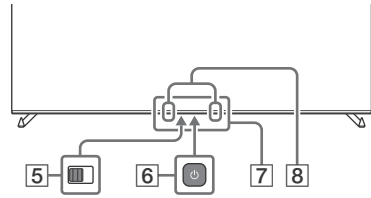
🔇 (Mute)*⁷

CH + / - (Channel)

▶ / ⏸

📺 (Guide): Display the digital programme guide of TV or TV box*⁸.

4 App buttons



5 BUILT-IN MIC SWITCH*⁵: Turn on/off the built-in MIC.

6 ⏻ (Power)

7 Remote Control sensor / Light sensor / LED

8 Built-in MIC*⁵*⁶*⁹: To enable the built-in MIC, press the Google Assistant/microphone button on the remote control and follow the on-screen instructions.

*¹ For other remote control models, refer to the online Help Guide for details.

*² RMF-TX900U only. To see the model name of the remote control, open the remote control cover and see the label on the remote control.

*³ The remote control backlight will illuminate when the light sensor detects the ambient light is low. Automatic illumination of the backlight can be turned off.

*⁴ The buzzer will emit a sound when you use the remote finder function. Refer to the online Help Guide for details.

*⁵ Only for limited region/country/model/language.

*⁶ Google Assistant or voice search requires an Internet connection.

*⁷ Accessibility shortcut is available by pressing and holding 🔇 (Mute).

*⁸ [TV box setup] setting is required.

*⁹ Power consumption will increase when the built-in MIC is enabled as it is always listening.



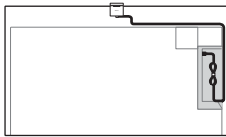
For more information, refer to the Help Guide.

Press ↵ (Input select) on the remote control and select [Help]. If [Help] does not exist, select [Edit] and add [Help].

Optional Camera and Microphone Unit (not supplied) Cable Management



Table-Top Stand position



Wall-mount position

Troubleshooting

General troubleshooting for issues like: black screen, no sound, frozen picture, TV does not respond, or network is lost, do the following steps.

- 1 Restart your TV by pressing the power button on the remote control for about five seconds. The TV will restart. If the TV does not recover, try unplugging the mains lead then press the power button on the TV and release it. Wait for two minutes, and plug in the mains lead. Or, press the power button on the TV for about 40 seconds until the TV turns off.
- 2 Refer to the Help menu shown below.
- 3 Connect your TV to the Internet and perform a software update. Sony recommends you to keep your TV software updated. Software updates provide new features and performance improvements.
- 4 Visit Sony support website (information provided at the end of this manual).

When you plug in the TV, the TV may not be able to turn on for a while even if you press the power button on the remote control or the TV.

It takes time to initialize the system. Wait for about one minute, then operate it again.

The remote control does not function.

- Replace the batteries.

The parental lock password has been forgotten.

- Enter 9999 for the PIN and enter the new PIN.

The screen becomes darker while watching TV.

- If the whole image or part of the image remains still, the screen brightness will be gradually reduced to prevent image retention. This is not a malfunction of the TV.

You are concerned about image retention.

If the same image is displayed repeatedly or for long periods of time, image retention may occur. To reduce image retention, we recommend that you turn off the TV normally by pressing the power button on the remote control or the TV.

Note


- Perform Panel refresh only when image retention is particularly noticeable. Avoid performing Panel refresh more than once a year because it may affect the usable life of the panel.
- Images that include clocks, logos and bright colours (including white) easily cause image retention. Avoid displaying these types of images for long periods of time, otherwise image retention may occur.

The message [Panel refresh did not finish...] is displayed.

When i) the TV is turned on or ii) the mains lead is unplugged during the Panel refresh, the Panel refresh is not completed. Please avoid the above two conditions during the Panel refresh.



For more information on troubleshooting, refer to the Help Guide.

Press  (Input select) on the remote control and select [Help]. If [Help] does not exist, select [Edit] and add [Help].

Specifications

System

Panel system: OLED (Organic Light Emitting Diode) Panel

TV system: Depend on your country/area selection/TV model

Analogue: B/G, D/K, I

Digital: DVB-T/DVB-C/DVB-T2

Satellite: DVB-S/DVB-S2

Colour system: PAL/SECAM/NTSC3.58 (Video only)/NTSC4.43 (Video only)

Channel coverage: Depend on your country/area selection/TV model

Analogue: UHF/VHF/Cable

Digital: UHF/VHF/Cable

Satellite: Intermediate Frequency

950-2150 MHz

Sound output

XR-77A8xK: 20 W + 10 W + 10 W + 10 W + 10 W

XR-65A8xK / 55A8xK: 10 W + 10 W + 10 W + 10 W + 10 W

XR-65A7xK / 55A7xK: 10 W + 10 W + 10 W + 10 W

Wireless technology

Protocol IEEE 802.11a/b/g/n/ac

Bluetooth® Version 4.2

| Frequency range | Output power |
|---|--------------|
| Wireless LAN (TV) | |
| 2400-2483.5 MHz | < 20.0 dBm |
| 5150-5250 MHz | < 23.0 dBm |
| 5250-5350 MHz | < 20.0 dBm |
| 5470-5725 MHz | < 20.0 dBm |
| 5725-5850 MHz | < 13.9 dBm |
| Bluetooth® (TV) | |
| 2400-2483.5 MHz | < 10.0 dBm |
| Bluetooth® (RMF-TX900U / RMF-TX800U / RMF-TX520E) | |
| 2400-2483.5 MHz | < 10.0 dBm |

Input/Output jacks

Antenna (aerial)/cable

75 ohm external terminal for VHF/UHF

Satellite antenna

Female F Type Connector, 75 ohm.

DiSEqC 1.0, LNB 13 V/18 V & 22 kHz tone, Single Cable Distribution EN50494.

→ / → AV IN / S-CENTER SPEAKER IN

Video/Audio input (mini jack)

S-centre speaker input (mini jack)

HDMI IN 1/2/3/4 (HDCP 2.3-compatible)

Video:

4096 × 2160p (50, 60 Hz)^{*1*2}, 4096 × 2160p (24 Hz)^{*1}, 3840 × 2160p (50, 60 Hz)^{*2}, 3840 × 2160p (24, 25, 30 Hz), 1080p (30, 50, 60, 100, 120 Hz), 1080/24p, 1080i (50, 60 Hz), 720p (30, 50, 60 Hz), 720/24p, 576p, 480p, PC Formats^{*3}

3840 × 2160p (100, 120 Hz)^{*2*4}

Audio:

In eARC (Enhanced Audio Return Channel) mode

Refer to the online Help Guide for details. Except eARC mode

5.1 channel linear PCM: 32/44.1/48/88.2/96/176.4/192 kHz 16/20/24 bits, Dolby Audio, Dolby Atmos, DTS

eARC/ARC (Enhanced Audio Return Channel/Audio Return Channel) (HDMI IN 3 only)^{*5}

In eARC mode

Refer to the online Help Guide for details.

In ARC mode

Two channel linear PCM: 48 kHz 16 bits, Dolby Audio, Dolby Atmos, DTS

↻ DIGITAL AUDIO OUT (OPTICAL)

Digital optical jack (Two channel linear PCM: 48 kHz 16 bits, Dolby Audio, DTS)

↻ 1, ↻ 2 (HDD REC)^{*6}

USB device port (↻ 2 USB HDD device for REC feature)

USB port 1 supports High Speed USB (USB 2.0)

USB port 2 supports Super Speed USB (USB 3.2 Gen 1)

📷

CAM (Conditional Access Module) slot

📶 LAN

10BASE-T/100BASE-TX connector (Depending on the operating environment of the network, connection speed may differ. The communication rate and quality are not guaranteed.)

Power, Product Fiche and others

Power requirements

220 V ~ 240 V AC, 50 Hz

Screen size (measured diagonally) (Approx.)

XR-77A8xK: 194.7 cm / 77 inches

XR-65A8xK / 65A7xK: 163.9 cm / 65 inches

XR-55A8xK / 55A7xK: 138.8 cm / 55 inches

Standby power consumption^{*7*8}

0.50 W

Display resolution (horizontal × vertical) (pixels)

3840 × 2160

Output rating

500 mA (for USB 1), 900 mA (for USB 2)

Dimensions (Approx.) (w × h × d) (cm)

with Table-Top Stand

Standard position:

XR-77A8xK: 172.2 × 102.4 × 38.9

XR-65A8xK: 144.8 × 86.2 × 33.0

XR-65A7xK: 144.8 × 91.0 × 33.8

XR-55A8xK: 122.7 × 73.8 × 33.0

XR-55A7xK: 122.7 × 78.5 × 33.8

Narrow position:

XR-77A8xK: 172.2 × 102.4 × 38.9

XR-65A8xK: 144.8 × 86.2 × 33.0

XR-55A8xK: 122.7 × 73.8 × 33.0

Soundbar position:

XR-77A8xK: 172.2 × 106.6 × 38.9

XR-65A8xK: 144.8 × 90.4 × 33.0

XR-55A8xK: 122.7 × 78.0 × 33.0

without Table-Top Stand

XR-77A8xK: 172.2 × 99.8 × 5.4

XR-65A8xK / 65A7xK: 144.8 × 83.6 × 5.3

XR-55A8xK / 55A7xK: 122.7 × 71.2 × 5.3

Stand width (Approx.) (cm)

Standard position:

XR-77A8xK: 140.9

XR-65A8xK / 55A8xK: 118.4

XR-65A7xK / 55A7xK: 105.2

Narrow position:

XR-77A8xK: 61.9

XR-65A8xK / 55A8xK: 84.7

Soundbar position:

XR-77A8xK: 140.9

XR-65A8xK / 55A8xK: 118.4

Mass (Approx.) (kg)

with Table-Top Stand

XR-77A8xK: 37

XR-65A8xK: 24.6

XR-65A7xK: 24.2

XR-55A8xK: 19.5

XR-55A7xK: 19.1

without Table-Top Stand

XR-77A8xK: 34.8

XR-65A8xK: 23

XR-65A7xK: 22.9

XR-55A8xK: 17.9

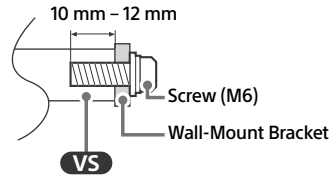
XR-55A7xK: 17.8

Others

Optional accessories

Wall-Mount Bracket: SU-WL850 / SU-WL450

Screw diameter and length:



Camera and Microphone Unit: CMU-BC1

Operating temperature: 0 °C – 40 °C

Operating humidity: 10 % – 80 % RH
(non-condensing)

- *1 When 4096 × 2160p is input and [Wide mode] is set to [Normal], the resolution is displayed as 3840 × 2160p. To display 4096 × 2160p, set [Wide mode] setting to [Full 1] or [Full 2].
- *2 Refer to the on screen menu to set [HDMI signal format].
- *3 Refer to the online Help Guide for details.
- *4 HDMI IN 3 & 4 only. Use the Ultra High Speed HDMI Cable to connect.
- *5 Connect your audio system to the HDMI IN 3 to route TV audio to your audio system.
- *6 Function not available in Italy.
- *7 Specified standby power is reached after the TV finishes necessary internal processes.
- *8 Standby power consumption will increase when your TV is connected to the network.

Note

- Optional accessories availability depends on countries/region/TV model/stock.
- Design and specifications are subject to change without notice.
- Subscriptions for services and applications may be required and additional terms, conditions and/or charges may apply when using Google Assistant.
- Product fiche in this manual is for COMMISSION DELEGATED REGULATION (EU) 1062/2010. Refer to its website for (EU) 2019/2013 information.

Product registration number (COMMISSION DELEGATED REGULATION (EU) 2019/2013)

XR-77A84K (1034885), XR-77A83K (1034883),
XR-77A80K (1034880), XR-65A84K (1034878),
XR-65A83K (1034876), XR-65A80K (1034875),
XR-65A75K (1034895), XR-55A84K (1034874),
XR-55A83K (1034872), XR-55A80K (1034871),
XR-55A75K (1034894).