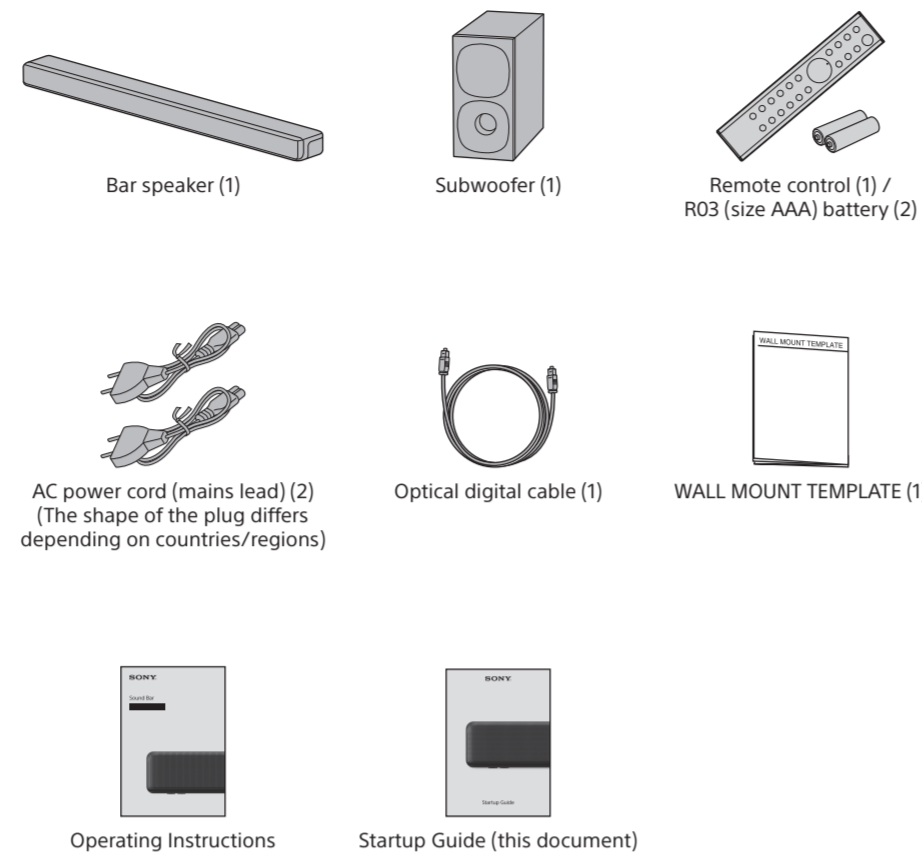




Startup Guide
Sound Bar : HT-G700

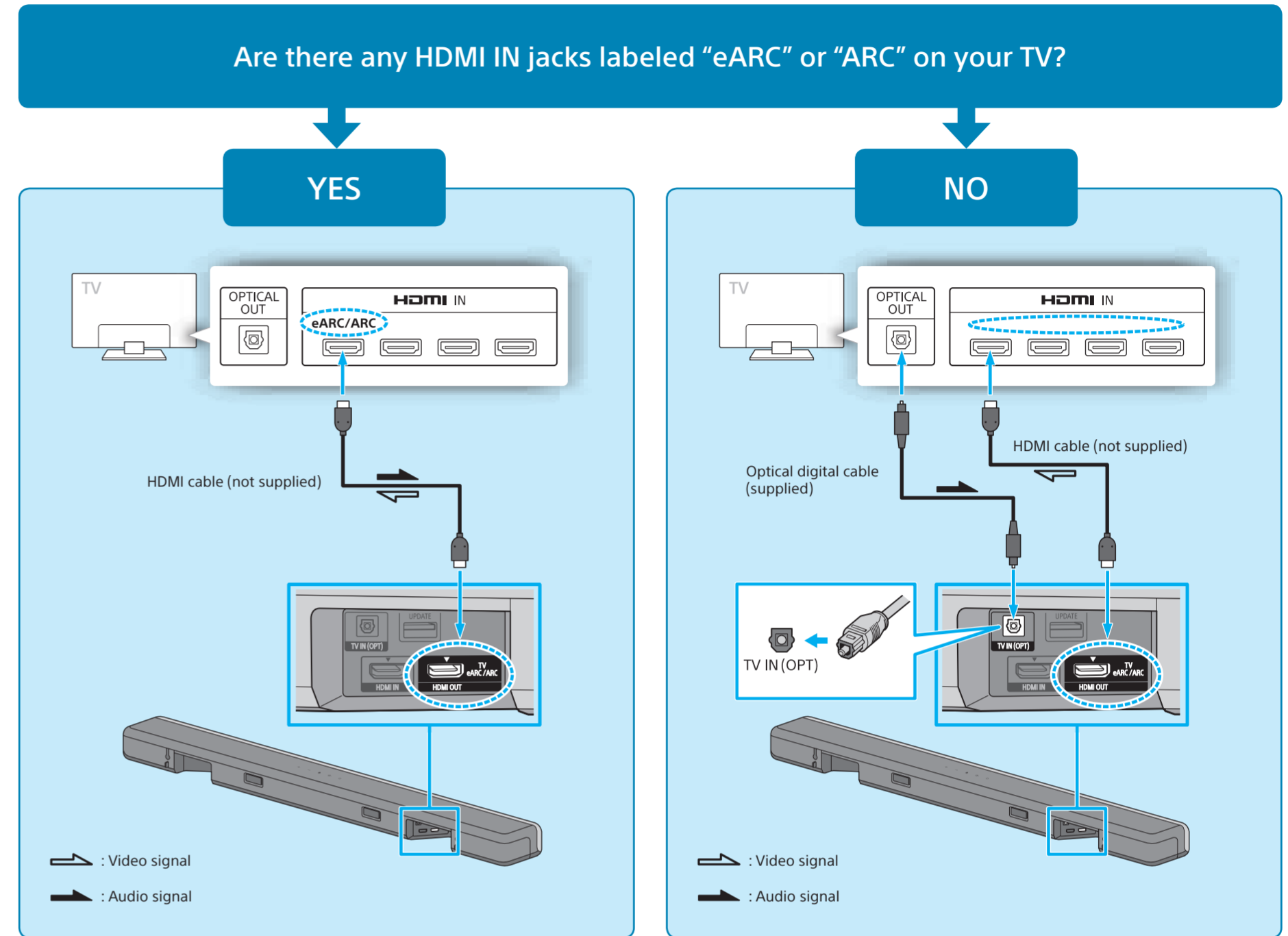
What's in the box



To set up the remote control

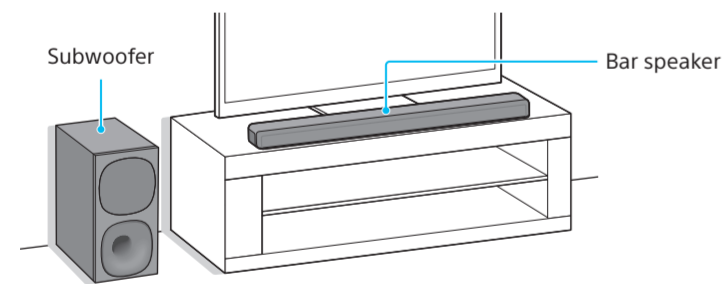


3 Connecting a TV

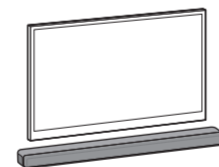


- Note**
- Make sure that the cable is firmly inserted.
 - If you select "YES," enable the Control for HDMI function on the TV. Otherwise, there will be no TV sound output from the system.
 - If you select "NO," connect the TV and the bar speaker with not only the HDMI cable (not supplied), but also an optical digital cable (supplied). Otherwise, there will be no TV sound output from the system. Check the shape of the optical digital cable's connectors and the jacks on the TV and the bar speaker. Insert the connectors into the jacks in the right directions. If you forcibly insert the connectors in the wrong directions, the connectors and the jacks may be damaged.
 - To watch 4K video content, refer to "Connecting a 4K TV and 4K Devices" in the Operating Instructions (separate document).

1 Deciding the installation position



To mount the Bar Speaker on a wall
Refer to "Mounting the Bar Speaker on a Wall" in the Operating Instructions (separate document).



- Note**
- Disconnect the AC power cords (mains leads) of the TV and devices from the AC outlets (mains) in advance to connect the system. The AC power cords must be reconnected before step 5.
 - Do not place magnetic cards on the system or near the system.
 - Do not cover the top of the bar speaker with metal objects such as a TV frame, etc. Wireless functions may become unstable.
 - Do not place metal objects around the system. Wireless functions may become unstable.

2 Selecting the TV connection method

Connect a TV with the HDMI cable (not supplied) →

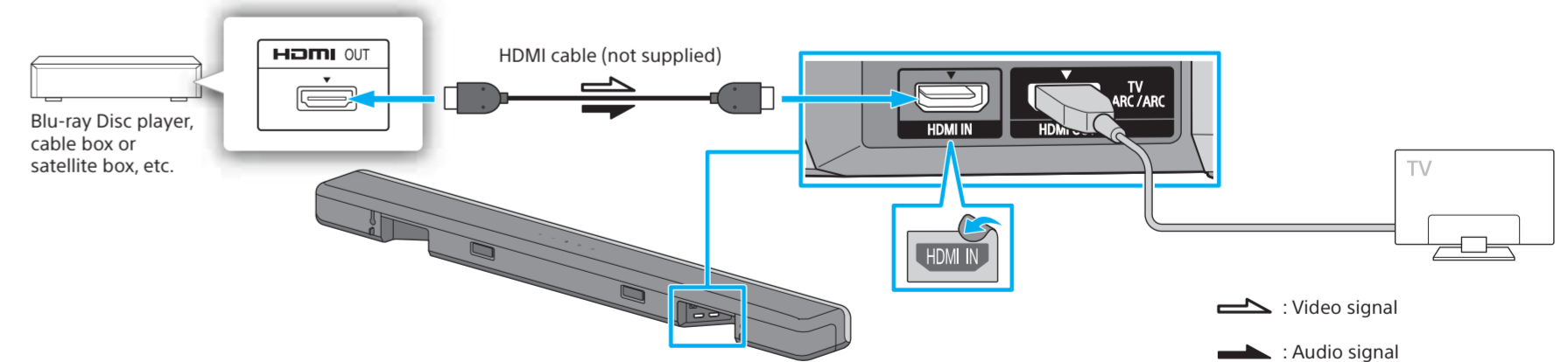
Go to Step 3

Connect a Sony TV with the BLUETOOTH function wirelessly →

Operating Instructions (separate document)

4 Connecting another device

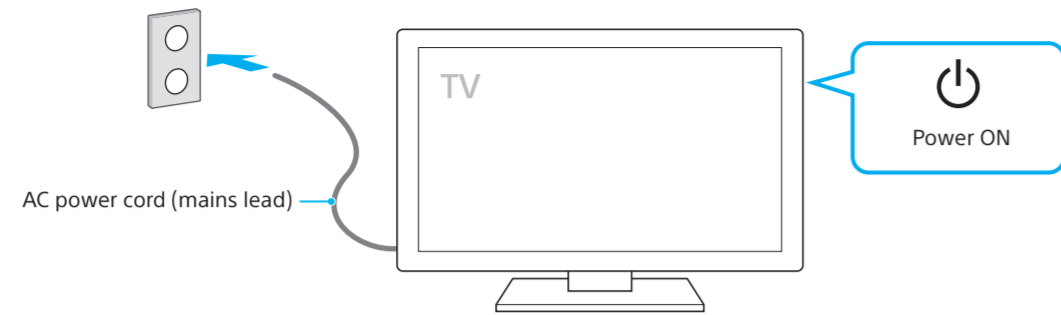
When a Blu-ray Disc™ player, cable box, satellite box, etc. is currently connected to your TV, disconnect the device from the TV and then connect it to the HDMI IN jack on the bar speaker to reproduce the high quality surround sound such as Dolby TrueHD, DTS-HD, etc. If your TV is compatible with the eARC function, you may be able to listen to high quality surround sound while devices are connected to the TV. For details, refer to the Operating Instructions (separate document) and the operating instructions supplied with the TV.



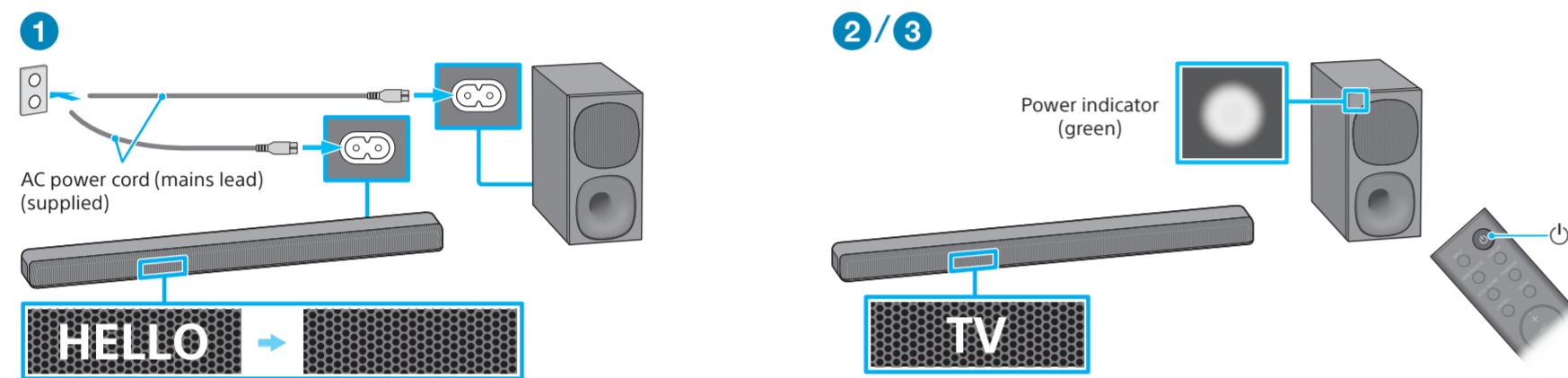
- Note**
- Make sure that the cable is firmly inserted.
 - To watch 4K video content, refer to "Connecting a 4K TV and 4K Devices" in the Operating Instructions (separate document).
 - If the picture and sound of the device that is connected to the system are not output properly, set [HDMI] - [FORMAT] to [STANDARD].



5 Turning on the TV

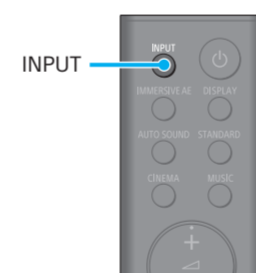


6 Turning on the system



- 1 Connect the AC power cords (mains leads) to the bar speaker and subwoofer, then connect the AC power cords (mains leads) to the AC outlets (mains). The remote control of the system does not work until [HELLO] in the front panel display on the bar speaker.
- 2 Press \odot (power) on the remote control of the system. [TV] appears in the front panel display on the bar speaker.
- 3 Confirm that the power indicator of the subwoofer is lit in green. If the power indicator of the subwoofer is lit in green, the connection with the bar speaker is complete. If not, refer to "Subwoofer" of "Troubleshooting" in the Operating Instructions (separate document).

7 Listening to sound



To listen to the audio of the TV

- 1 Select the desired input using the TV remote control. The screen switches to the television broadcast screen and the TV audio is output from the system. If [TV] does not appear in the front panel on the bar speaker, press INPUT on the remote control of the system repeatedly to select the TV input. [TV] appears in the front panel display on the bar speaker.

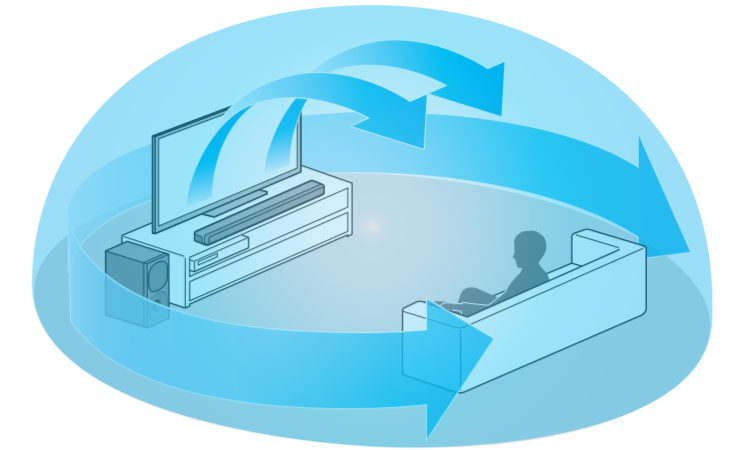
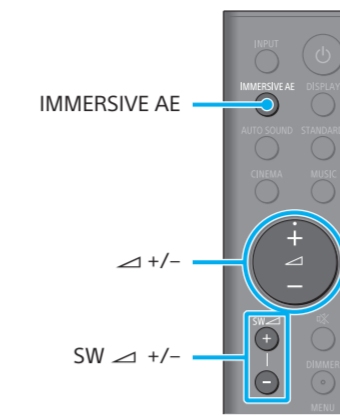
Note

- Depending on the order in which you connect the TV and the system, the system may be muted. If this happens, turn on the TV first, then the system.

To listen to the audio of a device that is connected to the HDMI IN jack on the bar speaker

- 1 Turn on the connected device. Then use the TV remote control to switch the TV's input to that for the HDMI IN jack to which the system is connected.
- 2 Press INPUT on the remote control of the system to switch to the HDMI input. [HDMI] appears in the front panel display on the bar speaker and the audio of the connected device is output from the system.

8 Enjoying immersive surround experience



- 1 Press IMMERSIVE AE on the remote control of the system. Enjoy movies, music, and more with sound that flows all around the room, surrounding you from all directions.
- 2 Adjust the volume. Adjust the volume of the bar speaker by pressing \triangleleft +/- on the remote control of the system. Adjust the volume of the subwoofer by pressing SW \triangleleft +/- on the remote control of the system.

Note

- The surround effect from all directions differs depending on the sound source.

Troubleshooting

No TV sound is output from the system, or no picture is displayed on the TV.

- Press INPUT on the remote control of the system repeatedly to select the TV input. [TV] appears in the front panel display on the bar speaker.
- Make sure that the input and output of the HDMI jacks on the system are correct.
- Disconnect the cables that are connected between the TV and the system, then connect them firmly again. Disconnect the AC power cords of the TV and the system from the AC outlets (mains), then connect them again.
- When the TV and the system are connected via an HDMI cable, enable the Control for HDMI function or the eARC/ARC function on the TV. For details on the TV's settings, refer to the operating instructions supplied with the TV. For more information about the Control for HDMI function, refer to the Operating Instructions (separate document).
- Check the sound setting of the TV. When the TV is set to output the sound from the TV speakers, change the setting to output the sound from the external speakers.

No picture or sound from the device connected to the system is output.

- Press INPUT on the remote control of the system to select the desired input. The input type that corresponds with the selected input appears in the front panel display on the bar speaker.
- Make sure that the input and output of the HDMI jacks on the system are correct.
- Disconnect the cables connected to the system, and then connect them again. Make sure that the cables are firmly inserted.

The TV remote control does not work.

- When the bar speaker obstructs the remote control sensor of the TV, the TV remote control may not work. In that case, set [SYSTEM] - [IR REPEATER] to [ON]. You can control the TV with the TV remote control. For details, refer to "When the TV Remote Control does not Work" in the Operating Instructions (separate document).

No sound or only a very low-level sound is heard from the subwoofer.

- The subwoofer is designed for playback of bass or low frequency sounds. When the input source does not contain much bass sound, such as in TV programs, the bass sound from the subwoofer may be difficult to hear. Press SW \triangleleft + on the remote control of the system to increase the volume of the subwoofer.
- Make sure that the power indicator on the subwoofer is lit in green. If the power indicator does not light up, refer to "Subwoofer" of "Troubleshooting" in the Operating Instructions (separate document).

If the problem is not solved even though you have tried the measures above, refer to "Troubleshooting" in the Operating Instructions (separate document).