

PRS

kordz
Connectivity.Assured

Please read instructions carefully prior to assembly. Scan QR code below for more product information.



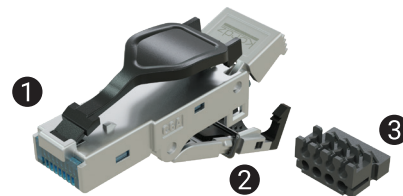
30mm actual size

Category 6A Shielded Field Termination Plug T3R45M-C6AS-ME

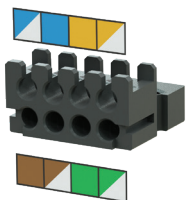
Field assembly instructions for installers

Included Parts

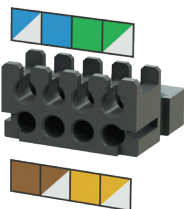
1. Plug
2. O-ring stopper
3. Wire manager



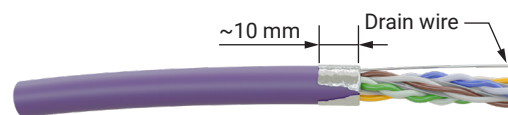
T568A



T568B



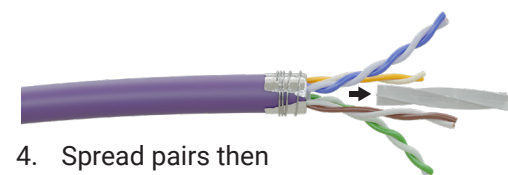
1. Remove the cable jacket.



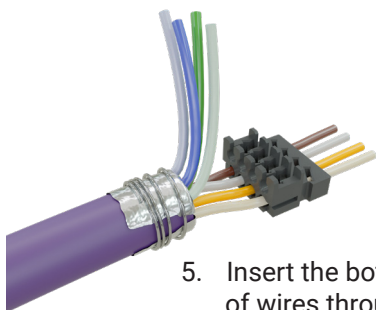
2. Peel back outer foil and separate the drain wire.



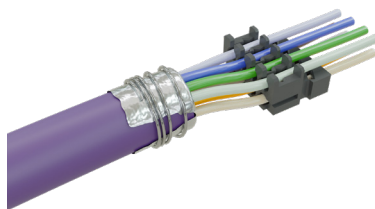
3. Wrap drain wire around foil.



4. Spread pairs then cut off cross separator.



5. Insert the bottom pairs of wires through the wire manager.

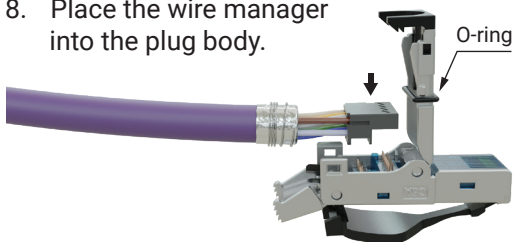


6. Clip the top pairs of wires into their respective positions in the wire manager.



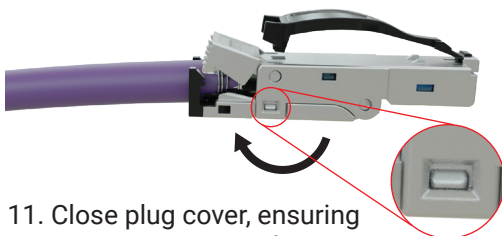
7. Cut off excess wires, taking care to cut flush to the wire manager.

8. Place the wire manager into the plug body.



9. Press down wire manager until wires are fully seated in the contacts.

10. Remove rubber O-ring stopper.



11. Close plug cover, ensuring the drain wire and foil is in contact with the grounding clip.

12. Close strain relief.

13. Attach latching arm.

