



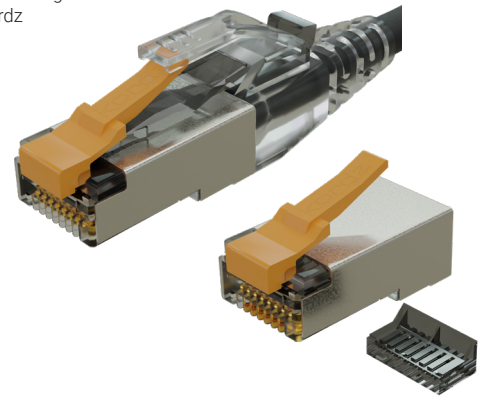
Technical Data Sheet

PRS SlimCat™ Shielded RJ45 Crimp Connector

Makes installation easier

The Kordz PRS SlimCat™ Shielded RJ45 Crimp Connector is designed specifically for use with the Kordz PRS SlimCat™ Cat6A Network Cable. The crimp connector builds on the success of the PRO and PRS patch cords by allowing integrators to terminate their own SlimCat™ cables to length. The connector features an innovative composite construction incorporating a shielded transparent body for termination ease with a durable 'snap-proof' nylon latch. The wire manager is tinted grey for handling ease and insertion verification. The optional PRO SlimCat Strain Relief is compatible with the connector and features a removable locking pin to reduce the chance of any accidental RJ45 connector disconnects. Termination can be achieved using the Kordz One Series Crimping Tool. This connector is rated for PoE++ at 100W along with the rest of the SlimCat™ range. Match with other Kordz PRS SlimCat™ Cat6A components for a complete Kordz ecosystem that delivers 'Connectivity Assured'.

- Enables delivery of ANSI/TIA-56A8.2-D Cat6A performance up to 50m when paired with Kordz PRS SlimCat™ Cat6A Network Cables
- Durable 'snap-proof' nylon latch
- Nickel-plated metal shielding
- Transparent polycarbonate body for termination ease
- Tinted wire-manager for handling ease and insertion verification
- Optional PRO strain relief available featuring a removable locking pin
- IEEE802.3bt 100W PoE++ capable
- UL94 V-0 fire-rated
- Eco-friendly packaging
- Lifetime warranty



Technical Specifications						
General Specifications						
Guaranteed Performance Category					Category 6A	
Applicable Performance Standards					ANSI/TIA-56A8.2-D	
Power over Ethernet Performance					IEEE 802.3bt PoE++ (max 100W)	
Power over Ethernet Tested Standards					IEC 60512-99-002	
Shielding Type					Shielded	
Shielding Material					Brass with nickel plating	
Wiring method					T568A T568B	
Dimensions						
Connector / Strain Relief Length					22.50mm 0.89in / 34.6mm 1.36in	
Connector / Strain Relief Width					11.65mm 0.46in / 11.7mm 0.46in	
Connector / Strain Relief Height					6.6mm 0.26in / 8.2mm 0.32in	
Mechanical						
Housing material					Polycarbonate	
Flammability Rating					UL 94 V-0	
Housing Colour					Transparent	
Contact Type					3 Prongs, Solid / Stranded	
Gold Plating					50µ"	
Liner					Included	
Part No	Type	Gauge	Pieces/Box	Box Dimension	Master Ctn Qty	Master Ctn Dimension
T3R58M-6A2S-CL	RJ45 Connector	28AWG	100pcs	250mm x 250mm x 82mm 9.8in x 9.8in x 3.2in	20 boxes	558mm x 298mm x 275mm 22in x 11.7in x 3.2in
T2R58S-C62U-CL	Strain Relief	28AWG	100pcs	250mm x 250mm x 82mm 9.8in x 9.8in x 3.2in	20 boxes	558mm x 298mm x 275mm 22in x 11.7in x 3.2in