

# DENON®

## DHT-S517

**Dolby Atmos Sound Bar & Wireless Subwoofer**

# Quick Start Guide

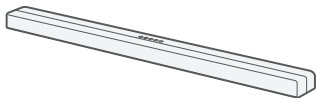
Kurzanleitung / Guide de démarrage rapide / Guida di Avvio Rapido /  
Guía de inicio rápido / Snelhandleiding / Snabbstartsguide /  
Краткое руководство пользователя / Skrócona instrukcja obsługi

## Read Me First....

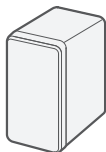
Bitte zuerst lesen... / Lisez-moi en premier.... / Nota preliminare.... /  
Lea esto primero.... / Lees mij eerst... / Läs detta först... /  
Прочитайте в первую очередь... / Przeczytaj to najpierw....

# Before you begin

## What's in the box



Sound bar



Subwoofer



Quick Start Guide



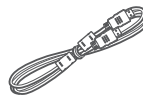
Safety Instructions



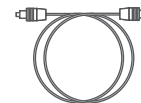
Wall mount template



Power cords



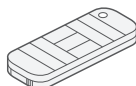
HDMI cable (4K)



Optical digital cable



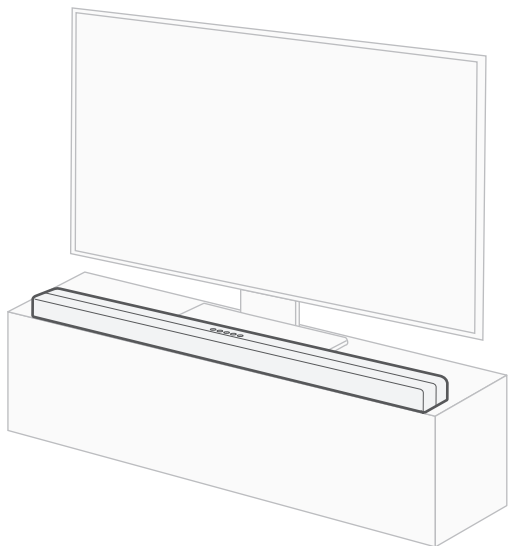
Wall mount spacers



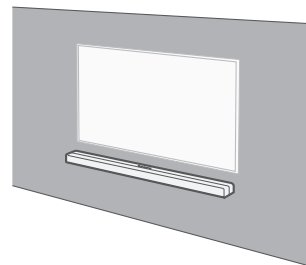
Remote control unit  
(RC-1245 / CR2025  
battery pre-installed)

# 1 Place the sound bar

For the best listening experience, place the sound bar centered under your TV and flush with the front edge of your cabinet.

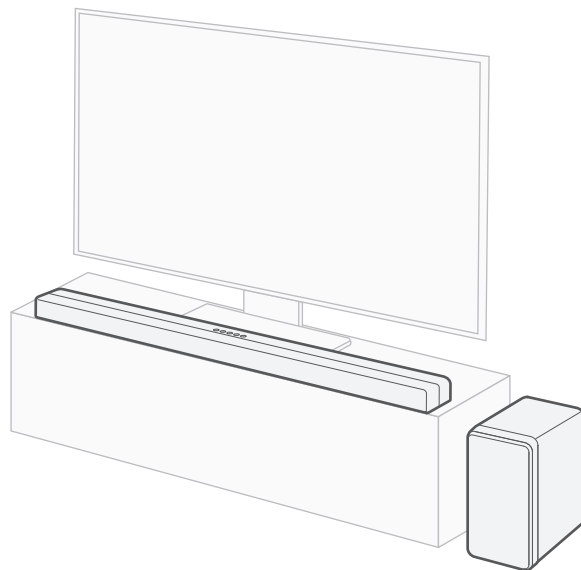


- The sound bar can also be mounted on a wall. Refer to the included wall mount template for details.
- For additional wall mounting assistance, refer to the online Owner's Manual or consult with your local Denon dealer or professional installer.



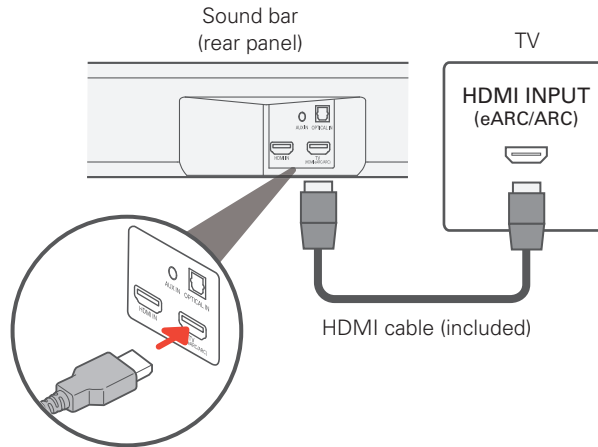
## 2 Place the subwoofer

Place the subwoofer on the floor near the sound bar.



### 3 Connect the sound bar to your TV

1. Connect one end of the HDMI cable to the port labeled "eARC" or "ARC" on your TV.
2. Connect the other end of the HDMI cable to the port marked "TV (HDMI eARC/ARC)" on your sound bar.



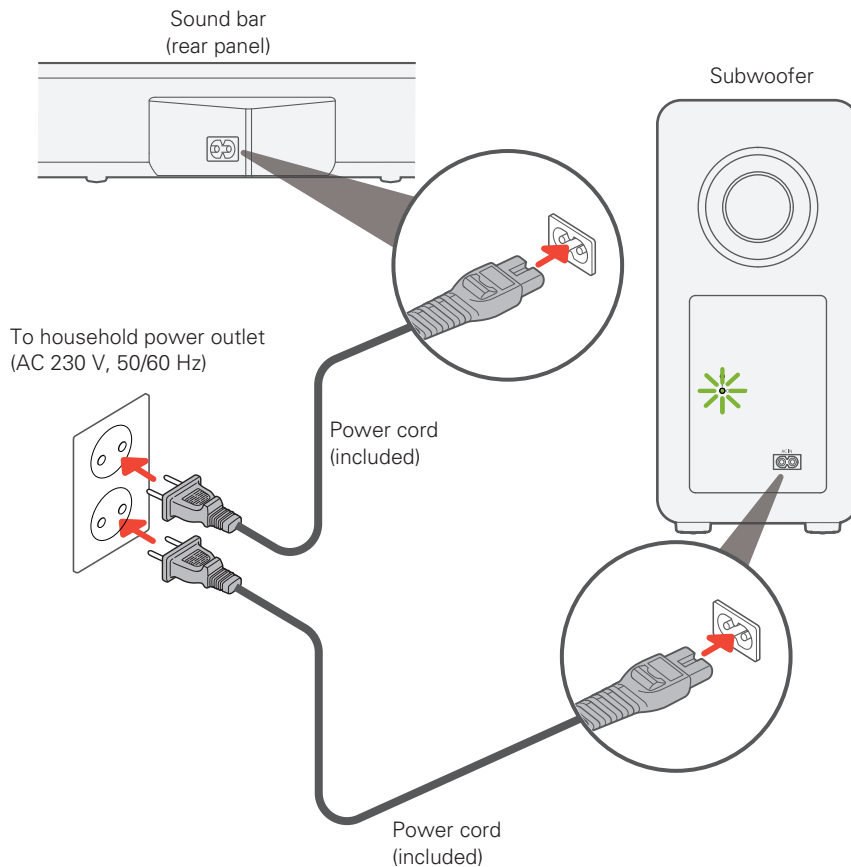
- If the TV does not have an HDMI labeled "eARC or ARC", connect the sound bar to the TV using the optical cable. Please note that an optical connection does not support Dolby Atmos.

## 4

## Connect the power cords to a wall outlet

Connect the included power cords to the sound bar and the subwoofer, and insert the plugs into an outlet.

Turn on the sound bar. The light on the back of the subwoofer turns solid green, indicating the subwoofer is paired with the sound bar.

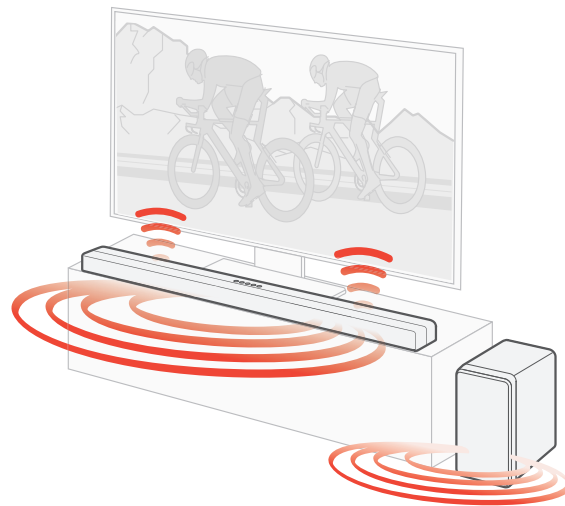


## 5 Setup is now complete!

Turn on your TV and verify that you hear sound playing from the sound bar.



- If you hear an echo or audio coming from the TV's internal speakers, make sure the TV speakers are switched off in the TV settings menu. Refer to the TV user manual for guidance.



### Owner's manual

- Refer to the online manual for other functions, information and operation procedure details.  
**[manuals.denon.com/DHTS517/EU/EN/](http://manuals.denon.com/DHTS517/EU/EN/)**
- For more information, visit **[www.denon.com](http://www.denon.com)**



## About the status lights

The lights on the sound bar indicate the power state, input source, audio format and other status information.




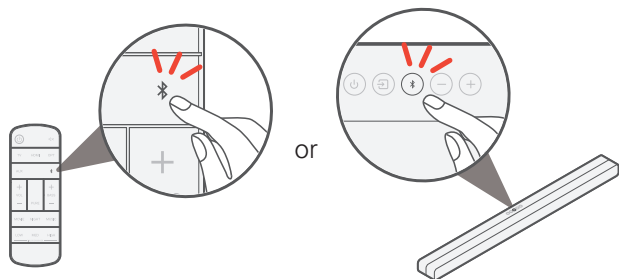
<b>Power</b>	Off (Standby)	<input type="radio"/>	<input type="radio"/>	<input type="radio"/>	<input type="radio"/>	<input type="radio"/>
	On	<input type="radio"/>	<input type="radio"/>	<input type="radio"/>	<input type="radio"/>	<input type="radio"/>
<b>Input source</b>	TV (HDMI eARC/ARC)	<input type="radio"/>	<input type="radio"/>	<input type="radio"/>	<input type="radio"/>	<input type="radio"/>
	HDMI	<input type="radio"/>	<input type="radio"/>	<input type="radio"/>	<input type="radio"/>	<input type="radio"/>
	TV (OPTICAL)	<input type="radio"/>	<input type="radio"/>	<input type="radio"/>	<input type="radio"/>	<input type="radio"/>
	AUX	<input type="radio"/>	<input type="radio"/>	<input type="radio"/>	<input type="radio"/>	<input type="radio"/>
	Bluetooth®	<input type="radio"/>	<input type="radio"/>	<input checked="" type="radio"/>	<input type="radio"/>	<input type="radio"/>
<b>Audio format</b>	Dolby Atmos®	<input checked="" type="radio"/>	<input type="radio"/>	<input type="radio"/>	<input type="radio"/>	<input type="radio"/>
	Dolby® (other than Atmos)	<input checked="" type="radio"/>	<input type="radio"/>	<input type="radio"/>	<input type="radio"/>	<input type="radio"/>
	PCM (or No Signal)	<input type="radio"/>	<input type="radio"/>	<input type="radio"/>	<input type="radio"/>	<input type="radio"/>
	Unsupported audio format	<input checked="" type="radio"/>	<input type="radio"/>	<input type="radio"/>	<input type="radio"/>	<input type="radio"/>



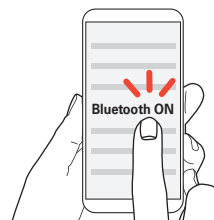
## Streaming music via Bluetooth

Before you can stream music from your Bluetooth device to the sound bar, you must first “pair” the sound bar and your device.

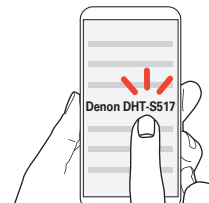
- ① Press the  (Bluetooth) button on the sound bar (or remote control unit) until the Bluetooth light blinks blue. The sound bar enters pairing mode.



- ② Go to the Bluetooth settings on your device, and make sure Bluetooth is turned ON.



- ③ Select “Denon DHT-S517”.  
The Bluetooth light on the sound bar turns solid blue when pairing is complete.



# Trademark information



COMPATIBLE WITH



Dolby, Dolby Vision, Dolby Atmos, and the double-D symbol are registered trademarks of Dolby Laboratories Licensing Corporation. Manufactured under license from Dolby Laboratories. Confidential unpublished works. Copyright © 2012–2021 Dolby Laboratories. All rights reserved.



The terms HDMI and HDMI High-Definition Multimedia Interface, and the HDMI Logo are trademarks or registered trademarks of HDMI Licensing, LLC in the United States and other countries.



The Bluetooth® word mark and logos are registered trademarks owned by the Bluetooth SIG, Inc. and any use of such marks by D&M Holdings Inc. is under license. Other trademarks and trade names are those of their respective owners.



**DENON®**  
[www.denon.com](http://www.denon.com)

Printed in China 5411 11942 20AD  
© 2021 Sound United. All Rights Reserved.